

NOW
AVAILABLE

Retail 24/7.

RETAIL SPACE SIR BARTON PLACE FOR SUBLEASE

1895 VENDOR WAY | LEXINGTON, KY



FEATURES

- :: 2,596± SF end-cap available in building with Talbots Outlet Store & Verizon Wireless
- :: Out-building fronting Bed Bath & Beyond, Staples, Gordman's, Half Price Books & Value City Furniture
- :: Located across from Hamburg Pavilion; nearby retailers include: Target, Kohls, Garden Ridge, Dick's Sporting Goods, Best Buy, Cinemas, Meijer, HH Gregg, Office Max
- :: High growth area with 60.15% population growth within one mile from 2000-2009
- :: Sir Barton Way traffic count: 27,100 ADT;
Man 'O War Blvd traffic count: 44,400 ADT

FOR MORE
INFORMATION
PLEASE
CONTACT

Frank Bellis

Vice President

502.412.7628

fbellis@cbrelouisville.com

Justin Baker

Vice President

502.412.7627

jbaker@cbrelouisville.com

Michael Tabor

Associate

502.412.7612

mtabor@cbrelouisville.com

www.cbrelouisville.com

6060 Dutchmans Lane | Suite 100 | Louisville, KY 40205

CBRE | Louisville
CB RICHARD ELLIS

NOW
AVAILABLE

Retail **24/7.**

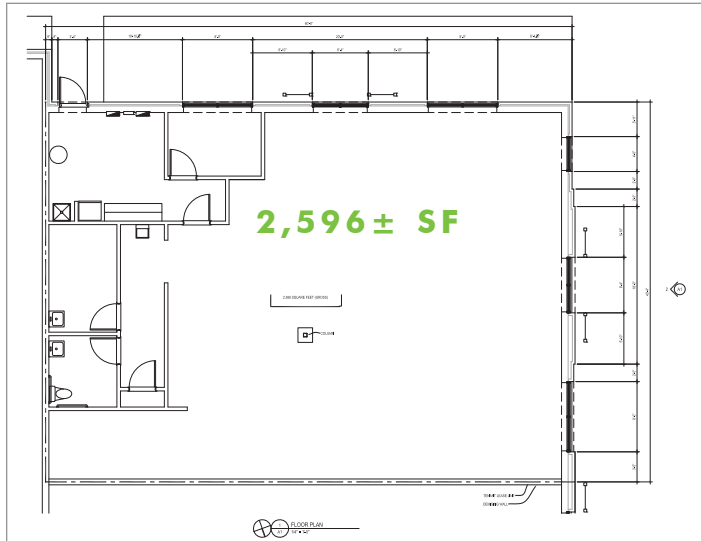
RETAIL SPACE SIR BARTON PLACE FOR SUBLEASE

1895 VENDOR WAY | LEXINGTON, KY

AERIAL
PHOTO



FLOOR
PLAN



2009 ESTIMATED DEMOGRAPHICS

	2 miles	3 miles	5 miles
POPULATION:	24,809	52,054	141,734
POPULATION GROWTH 2000-2009:	33.75%	14.66%	2.87%
AVG. HOUSEHOLD INCOME:	\$85,038	\$71,842	\$62,584

6060 Dutchmans Lane | Suite 100 | Louisville, KY 40205

©2009 CB Richard Ellis, Inc. The information above has been obtained from sources believed reliable. While we do not doubt its accuracy, we have not verified it and make no guarantee, warranty or representation about it. It is your responsibility to independently confirm its accuracy and completeness.

CBRE | Louisville
CB RICHARD ELLIS